

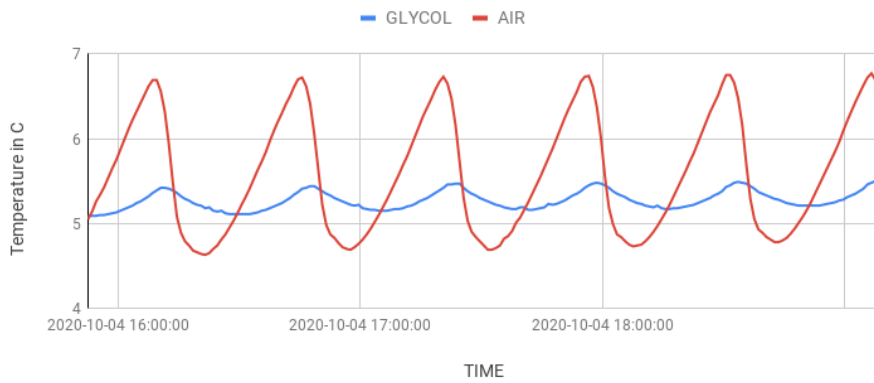
EL-PC-XX

Portable top-opening Cooler/Freezer



| MODEL | | EL-PC-20 | EL-PC-35 | EL-PC-65 | |
|------------------------------|----------------------------|---|--------------------------|--------------------------|--------------------------|
| Storage Volume | | L | 20 | 35 | 65 |
| Exterior Dimensions WxDxH | | in | 24.8x14.3x13.7 | 26.4x18x15.3 | 26.4x18x21.3 |
| | | mm | 630x364x350 | 671x455x390 | 671*455*540 |
| Material | | Polypropylene resin | | C-Pentane | |
| Input Voltage | | V | DC 12/24 | DC 12/24 | DC 12/24 |
| Input Current | Refrigerator (With fan) | A | DC12V/3.0A DC24V/1.5A | DC12V/3.0A DC24V/1.5A | DC12V/3.0A DC24V/1.5A |
| Power | | Watt | 45W | 50W | 60W |
| Refrigerant | | Dichlorodifluoromethane (HFC-134a) | | | |
| Temperature Range | | -20°C to 10°C (Ambient of 25°C at no load) | | | |
| Temperature Control | | Automatic temperature control by dial setting (Electronic thermostat control type) | | | |
| Weight | | LBS. | 30 | 40.5 | 45.2 |
| | | Kg | 14 | 18.4 | 20.5 |

SET POINT = 5C



SET POINT = -21C

