

SENTINEL NEXT

Monitor environment - Use low power Wi-Fi



Product Number: XTEMP-3001-0000

Specifications

Dimensions (HxWxD)	89mm x 60mm x 14mm (3.50" x 2.36" x 0.55")
Weight	102g (3.60 Oz)
Connectors	10-pin Sensor Connector; micro USB for Charging
Battery	Integrated 1000mAh Rechargeable Li-Ion Battery
Wi-Fi Protocols	IEEE 802.11b/g/n
Wi-Fi Models Supported	Wi-Fi Direct, Infrastructure, Remote
Wi-Fi Encryption	WEP, WPA/WPA2 Personal, PEAPv0, PEAPv1, EAP-TLS
On Board Data Storage	1 Week with a Once/Minute Sampling Rate
Operating Temperature	0°C to 40°C on Charger -20°C to 60°C on Battery only
Non-operating Temperature	-30°C to 70°C
Relative Humidity	10% to 90%
Certifications	FCC, CE

Software to View Data

Cloud, Enterprise or App based solution available



Contact us:

U.S. Office:

Argus Labs
7552 Central Park BLVD
Mason, OH 45040
Phone: +1 513 204 5837
Fax: +1 732 879 0248

European Office:

Argus Labs
PSE-D, EPFL
CH-1015 Lausanne, Switzerland
Phone: +41 21 693 8691
Fax: +41 21 693 8692

SENTINEL NEXT

Monitor environment - Use low power Wi-Fi



PRO Temperature Probe

(Iprobe-4000-0001)

Probe Length & Diameter	Stainless probe: 25mm, Ø 4mm (1", Ø 0.16")
Cable Length	304cm (10ft)
Measurement Range	-30°C to +150°C (-22°F to +302°C)
Accuracy	±0.2°C (±0.4°F) at 25°C (77°F)
Response Time (to reach 90%)	In water, with stirring: <10sec
Display Resolution	0.1°C (0.1°F)



RTD - Ultra Low Temperature Probe

(Iprobe-4101-0004)

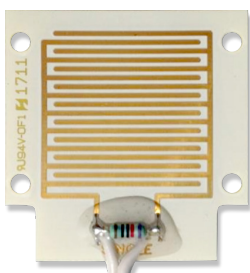
Probe Length & Diameter	Stainless probe: 25mm, Ø 4mm (1", Ø 0.16")
Cable Length	183cm (6ft)
Measurement Range	-200°C to +150°C (-328°F to +302°C)
Accuracy	±0.2°C (±0.4°F) at 25°C (77°F)
Response Time (to reach 90%)	In water, with stirring: <10sec
Display Resolution	0.1°C (0.1°F)
Optional DI (Digital Input)	dry contact available



Temperature and Relative Humidity Connector

(Iprobe-4000-0004)

Temperature Measurement Range	-40°C to +125°C (-40°F to +257°C)
Accuracy	±0.3°C (±0.5°F)
Relative Humidity Range	0 to +100% RH
Response Time (to reach 66%)	5 to 30sec for T; 8sec for RH
Display Resolution	0.1°C (0.1°F)



Water (or leak) detection Probe

(Iprobe-4101-0004)

Impedance range	0Ω to 2MΩ (Lower limit theoretical)
Accuracy	1.8V
Relative Humidity Range	<0.18mA
Response Time (to reach 66%)	10ms

SENTINEL NEXT

Monitor environment - Use low power Wi-Fi



Large Range CO₂ Probe (0-30%) (Iprobe-4400-0002)

Probe Dimensions	7.6cm x 9.5cm x 3.8cm (3" x 3.75" x 1.5")
Cable Length	100cm (~39")
Operating Principle	Non-dispersive infrared (NDIR)
Measurement range CO₂	0 to 30% _{vol} (CO ₂)
Measurement RH	0 to 100% (non-condensing)
Measurement range °C	-40 to 60 °C
Accuracy	± 0,25 _{vol} ± 3% of reading
Operation temperature range	0 to 50 °C
Operation humidity range	0 to 95% RH (non-condensing)
Display Resolution	0.1°C (0.1°F)



Ambient CO₂ Probe (Iprobe-4400-0001)

Probe Dimensions	7.6cm x 9.5cm x 3.8cm (3" x 3.75" x 1.5")
Cable Length	100cm (~39")
Operating Principle	Non-dispersive infrared (NDIR)
Measurement range CO₂	0 to 5000 ppm (CO ₂)
Measurement RH	0 to 100% (non-condensing)
Measurement range °C	0 to 50 °C
Accuracy	± 30ppm ± 3% of reading
Operation temperature range	0 to 50 °C
Operation humidity range	0 to 80% RH (non-condensing)
Display Resolution	0.1°C (0.1°F)

Contact us:

U.S. Office:

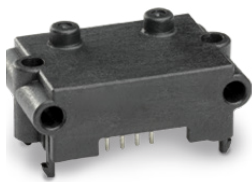
Argus Labs
7552 Central Park BLVD
Mason, OH 45040
Phone: +1 513 204 5837
Fax: +1 732 879 0248

European Office:

Argus Labs
PSE-D, EPFL
CH-1015 Lausanne, Switzerland
Phone: +41 21 693 8691
Fax: +41 21 693 8692

SENTINEL NEXT

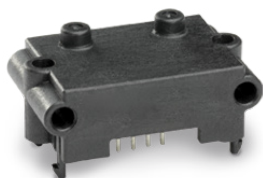
Monitor environment - Use low power Wi-Fi



Differential Pressure 125 Pa

(XTEMP-2000-0020)

Output	I ² C
Pneumatic Connection	Manifold or Tube
Pressure range (bidirectional)	125 Pa 0.5" H2O
Accuracy of measured value	3%
Lowest detectable pressure	< 0.01 Pa
Measurement speed	0.5 ms
Calibrated for	Air, N2
Gas compatibility	Air, inert gases



Differential Pressure 500 Pa

(XTEMP-2000-0021)

Output	I ² C
Pneumatic Connection	Manifold or Tube
Pressure range (bidirectional)	500 Pa 2" H2O
Accuracy of measured value	3%
Lowest detectable pressure	< 0.02 Pa
Measurement speed	0.5 ms
Calibrated for	Air, N2
Gas compatibility	Air, inert gases



Miscellaneous

Recommended Buffer Solutions
Glycol, Glass Beads, IceClear PGX. Specify buffer solution on order.

NIST or NIST-ILAC Certification available

Contact us:

U.S. Office:

Argus Labs
7552 Central Park BLVD
Mason, OH 45040
Phone: +1 513 204 5837
Fax: +1 732 879 0248

European Office:

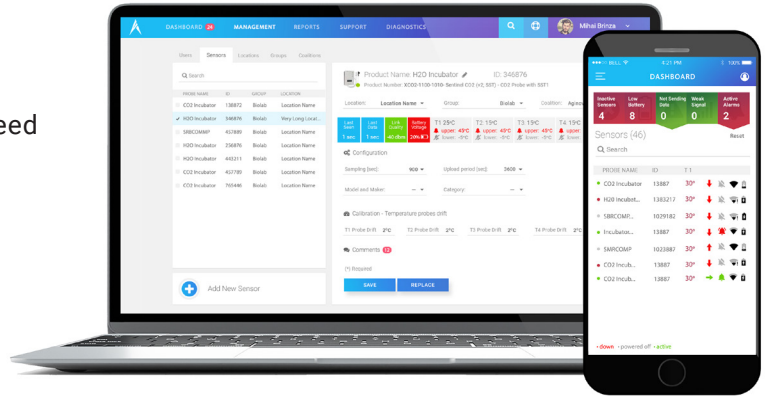
Argus Labs
PSE-D, EPFL
CH-1015 Lausanne, Switzerland
Phone: +41 21 693 8691
Fax: +41 21 693 8692

SENTINEL NEXT IoT Portal



The Sentinel Next App provides all the tools you need to monitor your important assets on the go.

- Sensor Configuration Wizard
- Push notification alarms
- Sensor signing
- Graphs/Data
- Sensor Health



Inactive Sensors	Low Battery	Not Sending Data	Weak Signal	Low Uptime	Active Alarms
47/156	20/156	47/156	19/156	47/156	23/156

Probe	T1	T2	Status
CompartmentT	74.93	N/A	🟢🔔📶
202032 -20 freezer	-5.10	N/A	🟢🔔📶
AUG115Room	74.50	N/A	🟢🔔📶
ContactorCoilA temp	73.80	N/A	🟢🔔📶
ContactorCoilB Temp	74.53	N/A	🟢🔔📶
HAG1 -80, 3-271, 202..	-121.04	N/A	🟢🔔📶
HAG2 -20, 3-221, 202..	N/A	N/A	🟢🔔📶
ICProbe_Mason_906	72.55	N/A	🟢🔔📶
Mason_Pro_113	58.64	N/A	🟢🔔📶
Mason_Pro_T	74.48	N/A	🟢🔔📶
New1 -80, 3-291, 202..	-98.05	N/A	🟢🔔📶
Sensor_00200002	72.91	N/A	🟢🔔📶
Sensor_00200003	74.26	N/A	🟢🔔📶

Product: 202032 -20 freezer - ID: 00202032

Product Number: External Pro Probe - XTEMP_2000_0001
 Location: Buck Default L Group: Buck Default G Coalition: Buck Default C

Last Seen: 0h2m Last Data: 0h2m Link Quality: -76 dBm Battery Voltage: 4.00 V

temp1: -5.10 °F -114.00 °F
17.00 °F

Graph Data Map Open Alarms Closed Alarms Reports Health

Type: temp1 °F Date: Last 100 From: dd/mm/yyyy To: dd/mm/yyyy Show datapoints Show battery & signal

10:00 11:00 12:00 13:00 14:00 15:00 16:00 17:00 18:00

IoT Cloud Services

Your data is stored on the Argus Labs Cloud

IoT Cloud-monitoring service designed for the scientific, business and technology needs of the Pharmaceutical, Blood Bank, Biotech, Hospitals, Pharmacy and Life Sciences industries. The solution is 21 CFR Part 11 compliant.

- Evaluation of our sensors
- Low to large number of sensors
- Setups which require web access
- Monitoring 10+ types of sensors
- New asset tracking feature (call us)

Contact us:

U.S. Office:
 Argus Labs
 7552 Central Park BLVD
 Mason, OH 45040
 Phone: +1 513 204 5837
 Fax: +1 732 879 0248

European Office:
 Argus Labs
 PSE-D, EPFL
 CH-1015 Lausanne, Switzerland
 Phone: +41 21 693 8691
 Fax: +41 21 693 8692